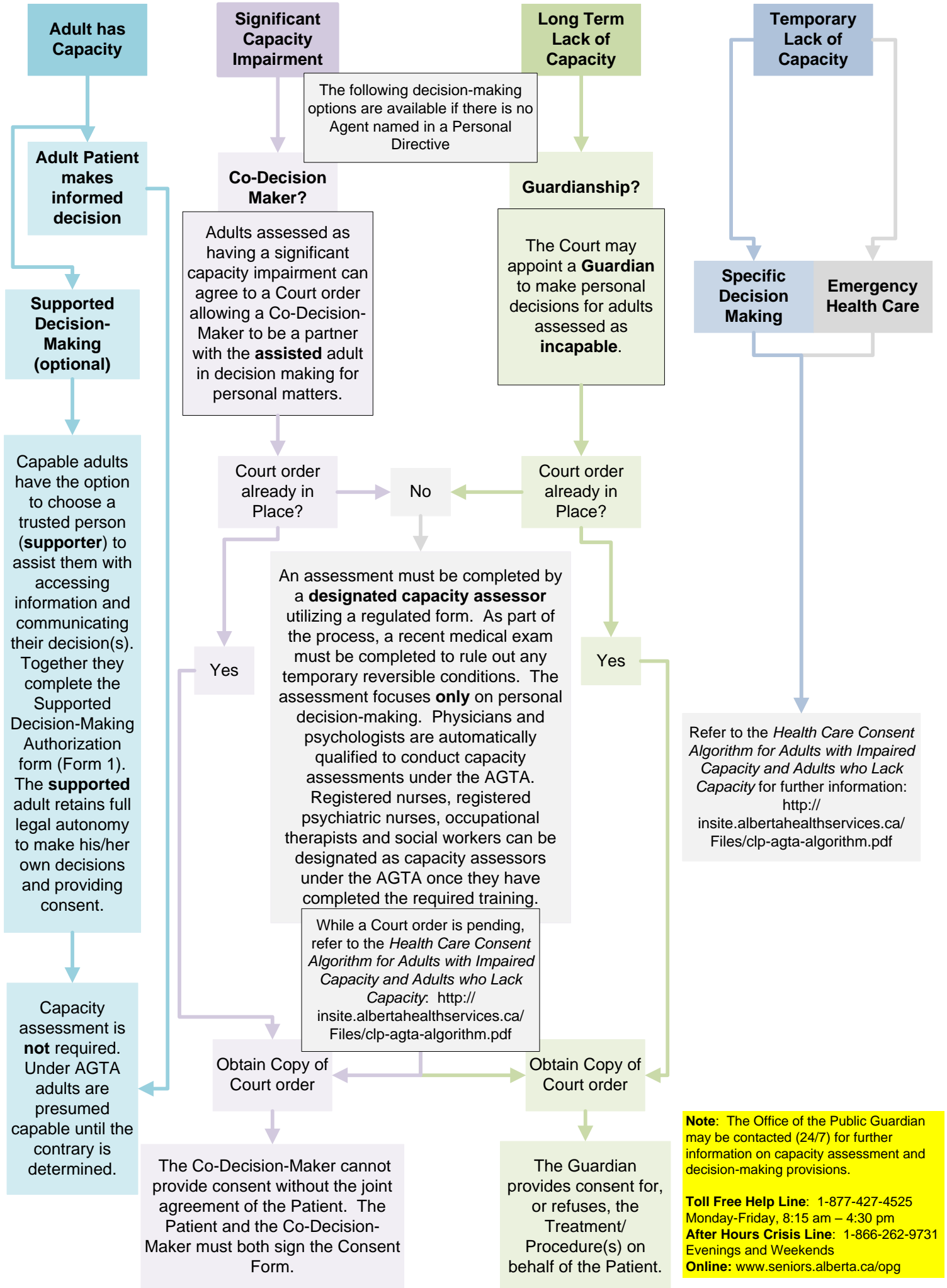


## Range of Capacity and Decision-Making Options

For further information please refer to the Consent to Treatment/Procedure(s) Policy at: <http://insite.albertahealthservices.ca/2270.asp>

This document outlines a range of decision-making options available to clinicians to consider when obtaining Informed Consent.



**Disclaimer**

This algorithm is intended to be a guide and is not to replace the content of the AHS policy Consent to Treatment/Procedure(s) and its five related procedures or Legal advice. Examples herein are for illustrative purposes only; the application of the AHS policy/procedures and legislation may vary depending on circumstances unique to each situation. Readers are encouraged to view the policy/procedure documents and legislation directly and should consult Clinical Policy [clinicalpolicy@albertahealthservices.ca](mailto:clinicalpolicy@albertahealthservices.ca) if need of clarification.